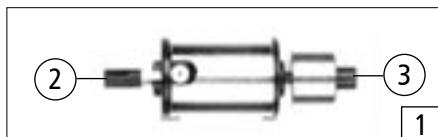
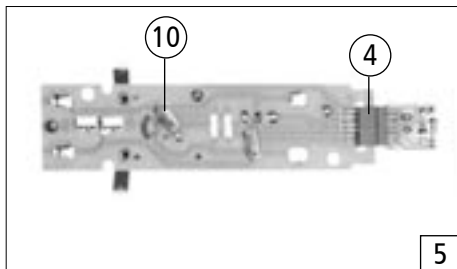
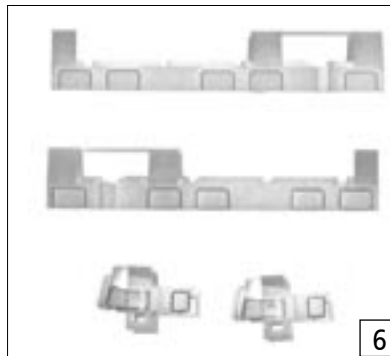
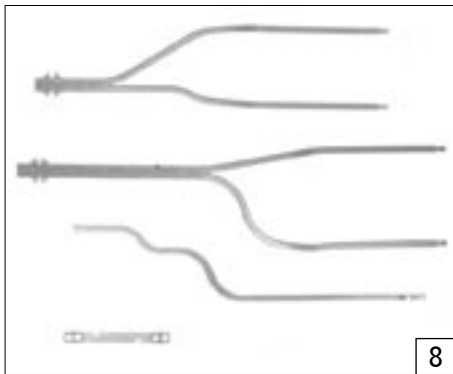
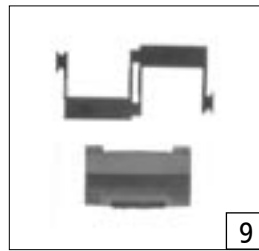
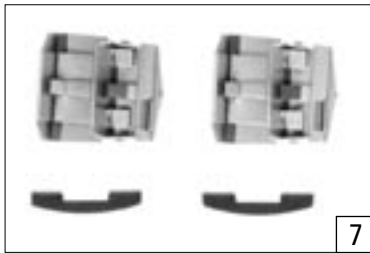
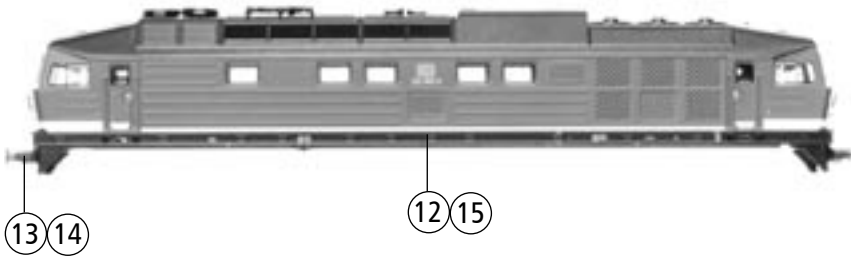


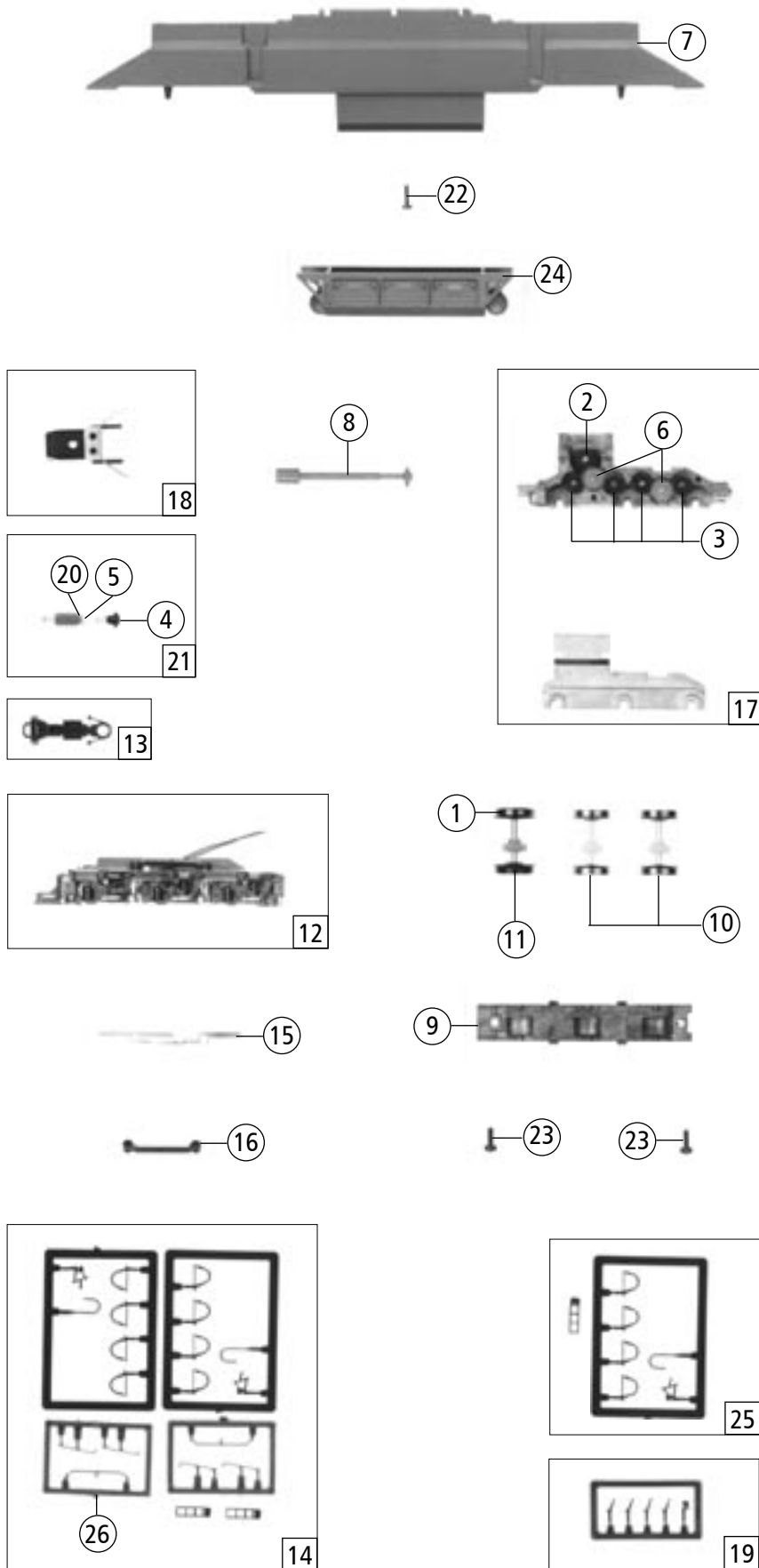


Symbolische Darstellung
Symbolic Illustration



Pos. Nr. Pos.no.	Beschreibung Description	Art.-Nr. Art.no.	Preisgruppe Price bracket
36203		132	==
36204		142	==
1	Motor Motor	85125	55
2	Kardanschale Cardan bearing	87104	3
3	Kardanschale 8,0 mm Cardan bearing 8,0mm	87152	2
4	Steckplatine Printed	87829	20
5	Platine komplett Printed circuit assembly	87859	38
6	Fenstersatz Glazing set	107654	20
7	Führerstand-Trittbrettsatz Drivers cab and running set	107655	10
8	Lichtleitstäbesatz Light transmission bar set	107656	10
9	Lichtabdeckungsatz Light cover set	107657	6
10	Drahtlampe T3/4 16V 30mA Light bulb T3/4 16V 30mA	108616	10
11	GF-Schraube M2x5 GF-Screw M2x5	114966	2
12	Gehäuse lack. u. beddruck Betr. Nr.132 188-4 Body printed and coated Loco no. 132 188-4	115837	66
13	Puffer gewölbt bedruckt Buffer vaulted printed	115838	2
14	Puffer flach bedruckt Buffer flat printed	115839	2
Abweichende Teile 36204 Variant Part 36204			
15	Gehäuse lack. u. beddruck Betr.Nr.142 001-7 Body printed and coated Loco no. 142 001-7	115842	62

Änderungen in Konstruktion und Ausführung vorbehalten
We reserve the right to change the construction and specification



Pos. Nr. Pos.no.	Beschreibung Description	Art.-Nr. Art.no.	Preisgruppe Price bracket
36203	DR	132	=
36204	DR	142	=
1	Hafring N 8-10mm 0,3 Traction tyre set	85611	17
2	Schnecken Zahnrad Z=19/14 M=0.3 Gear Z=19/14 M=0.3	86400	3
3	Zahnrad Z=14 gerade M=0.3 rot Gear Z=14 gerade M=0.3 red	86496	2
4	Kardankugel Cardan shaft	87106	2
5	Schneckenlager Worm axle bearing	89750	4
6	Zwischenzahnrad Gear between	97738	3
7	Grundrahmen Frame	107644	23
8	Kardanwelle Cardan shaft	107646	3
9	Getriebeboden Gear bottom	107649	5
10	Radsatz ohne Hafring Wheelset without traction tyre	107650	16
11	Radsatz mit 2 Hafringen Wheelset with traction tyre	107651	18
12	Blende kpl. Bogie frame assembly	107652	23
13	Kupplung kpl. Coupling assembly	107653	4
14	Zurüstbeutel Bag with accessories	107660	15
15	Radkontakt Wheel current contact strip	108045	3
16	Kontakthalter Contact holder	108046	2
17	Getriebesatz Gear part set	108048	9
18	Schneckendeckel m. Stab. Feder Worm cover with vibration damper	108051	8
19	Bremsschlauch+Kupplungshaken Air-brake hose and coupling hook	109329	6
20	Scheibe Disc	112394	3
21	Schneckensatz Worm set	113059	24
22	Schraube M1.6x6 Screw M1.6x6	113069	2
23	GF-Schraube M1.6x4 GF-Screw M1.6x4	114850	2
24	Tank Tank	115836	10
25	TT-Rahmen-Trittleitersatz TT-frame - ladder set	115840	2
26	Griffrahmen Handholds	115841	2

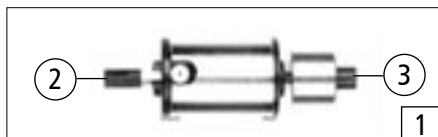
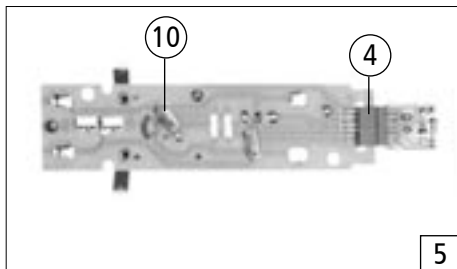
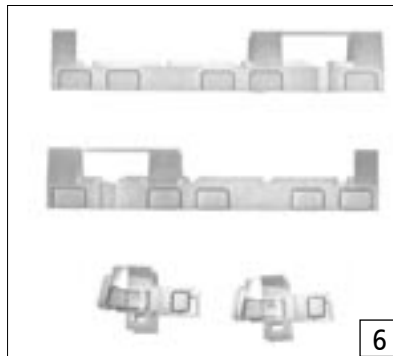
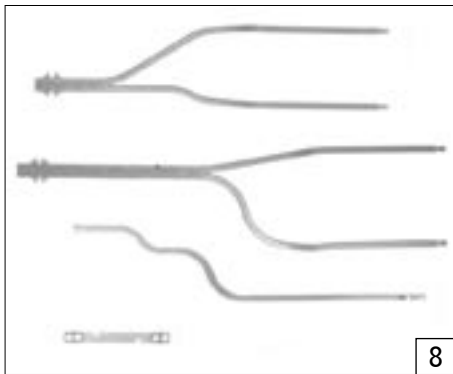
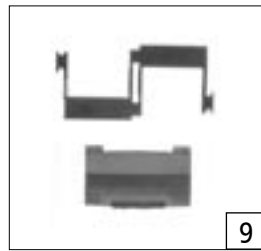
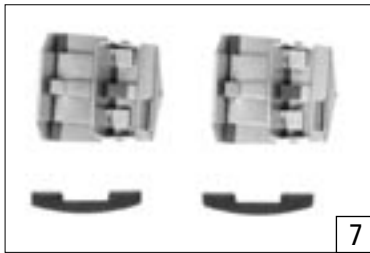
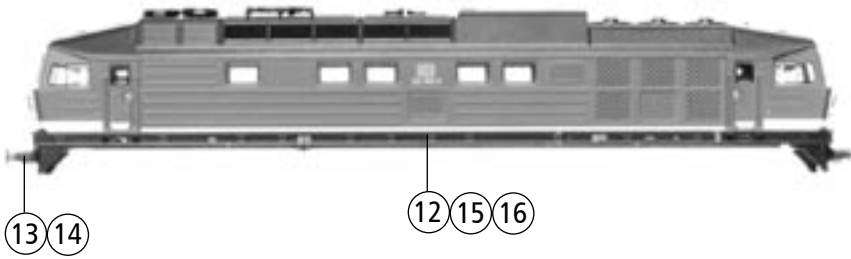
Ersatzteile erhalten Sie bei Ihrem Fachhändler, oder Ihrer Landesvertretung oder bei:

You can order your Replacement Parts at your local dealer, your country representative or:

Roco Modellsportwaren GmbH
Kundendienst
Rifer Hauptstraße 21
A-5400 Hallein

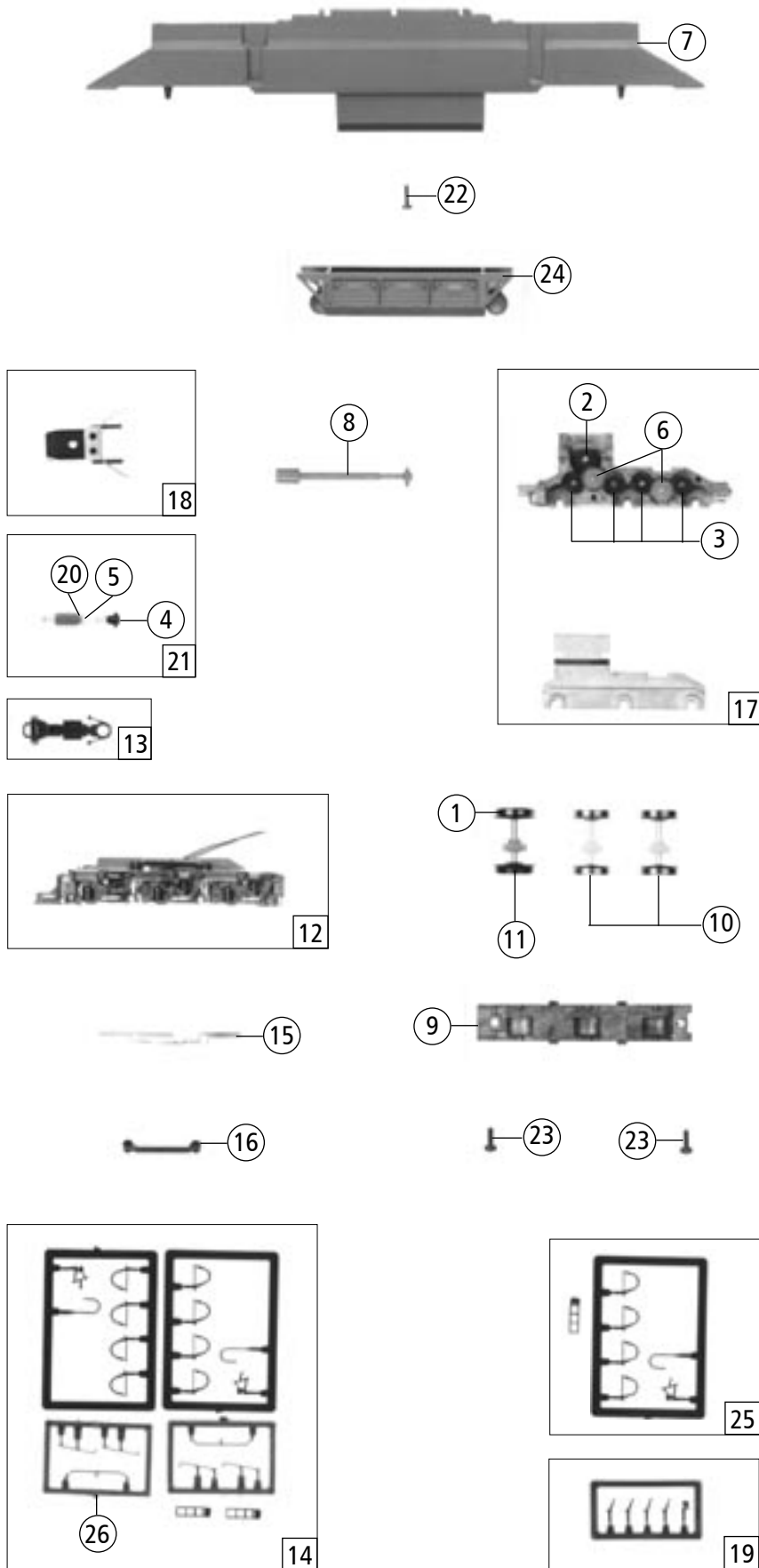


Symbolische Darstellung
Symbolic Illustration



Pos. Nr. Pos.no.	Beschreibung Description	Art.-Nr. Art.no.	Preisgruppe Price bracket
36203		132	==
36204		142	==
36205		142	==
1	Motor Motor	85125	55
2	Kardanschale Cardan bearing	87104	3
3	Kardanschale 8,0 mm Cardan bearing 8,0mm	87152	2
4	Steckplatine Printed	87829	20
5	Platine komplett Printed circuit assembly	87859	38
6	Fenstersatz Glazing set	107654	20
7	Führerstand-Trittbrettsatz Drivers cab and running set	107655	10
8	Lichtleitstäbesatz Light transmission bar set	107656	10
9	Lichtabdeckungssatz Light cover set	107657	6
10	Drahtlampe T3/4 16V 30mA Light bulb T3/4 16V 30mA	108616	10
11	GF-Schraube M2x5 GF-Screw M2x5	114966	2
12	Gehäuse lack. u. bedruckt Betr. Nr.132 188-4 Body printed and coated Loco no. 132 188-4	115837	66
13	Puffer gewölbt bedruckt Buffer vaulted printed	115838	2
14	Puffer flach bedruckt Buffer flat printed	115839	2
Abweichende Teile 36204 Variant Part 36204			
15	Gehäuse lack. u. bedruckt Betr.Nr.142 001-7 Body printed and coated Loco no. 142 001-7	115842	62
Abweichende Teile 36205 Variant Part 36205			
16	Gehäuse lack. u. bedruckt Betr.Nr.142 003-3 Body printed and coated Loco no. 142 003-3	117078	45

Änderungen in Konstruktion und Ausführung vorbehalten
We reserve the right to change the construction and specification



Pos. Nr. Pos. no.	Beschreibung Description	Art.-Nr. Art. no.	Preisgruppe Price bracket
36203	DR	132	=
36204	DR	142	=
36205	DR	142	=
1	Hafring N 8-10mm 0,3 Traction tyre set	85611	17
2	Schneckenzahnrad Z=19/14 M=0.3 Gear Z=19/14 M=0.3	86400	3
3	Zahnrad Z=14 gerade M=0.3 rot Gear Z=14 gerade M=0.3 red	86496	2
4	Kardankugel Cardan shaft	87106	2
5	Schneckenlager Worm axle bearing	89750	4
6	Zwischenzahnrad Gear between	97738	3
7	Grundrahmen Frame	107644	23
8	Kardanwelle Cardan shaft	107646	3
9	Getriebeboden Gear bottom	107649	5
10	Radsatz ohne Hafring Wheelset without traction tyre	107650	16
11	Radsatz mit 2 Hafringen Wheelset with traction tyre	107651	18
12	Blende kpl. Bogie frame assembly	107652	23
13	Kupplung kpl. Coupling assembly	107653	4
14	Zurüstbeutel Bag with accessories	107660	15
15	Radkontakt Wheel current contact strip	108045	3
16	Kontakthalter Contact holder	108046	2
17	Getriebesatz Gear part set	108048	9
18	Schneckendeckel m. Stab. Feder Worm cover with vibration damper	108051	8
19	Bremsschlauch+Kupplungshaken Air-brake hose and coupling hook	109329	6
20	Scheibe Disc	112394	3
21	Schneckensatz Worm set	113059	24
22	Schraube M1.6x6 Screw M1.6x6	113069	2
23	GF-Schraube M1.6X4 GF-Screw M1.6x4	114850	2
24	Tank Tank	115836	10
25	TT-Rahmen-Trittleitersatz TT-frame - ladder set	115840	2
26	Griffrahmen Handholds	115841	2

Ersatzteile erhalten Sie bei Ihrem Fachhändler, oder Ihrer Landesvertretung oder bei:

You can order your Replacement Parts at your local dealer, your country representative or:

Roco Modellschienenbahnen GmbH
Kundendienst
Rifer Hauptstraße 21
A-5400 Hallein

