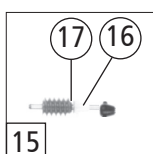
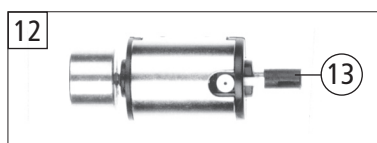
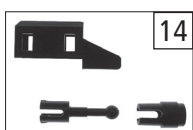
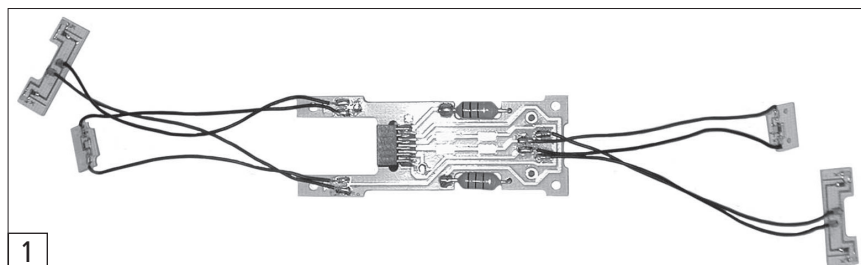
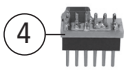


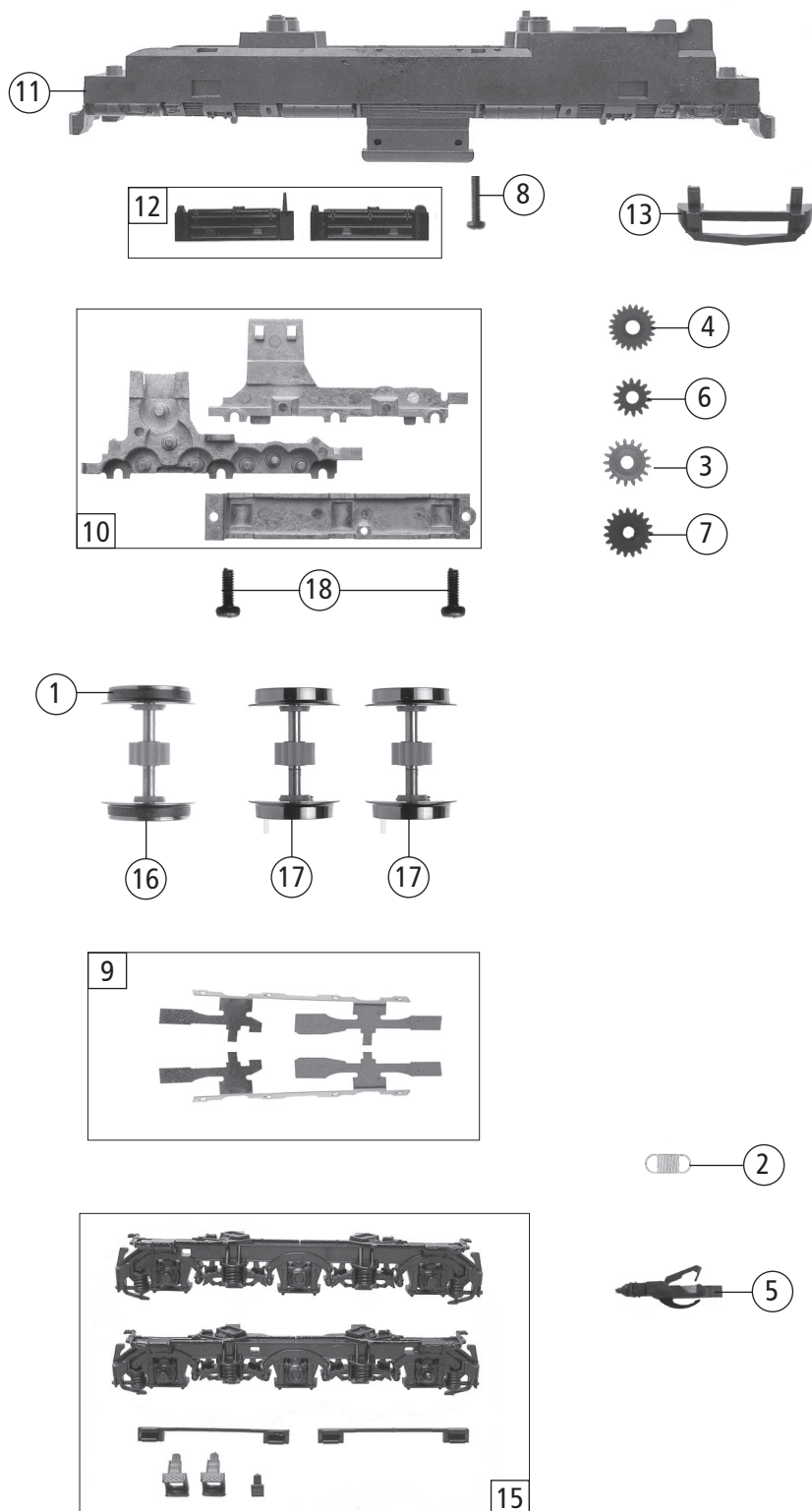
19 o. Abb. / no ill.  
Lautsprecher  
Loudspeaker

18 o. Abb. / no ill.  
Loksound micro  
Loco sound micro



Pos. Nr. Pos.no.	Beschreibung Description	Art.-Nr. Art.no.	Preisgruppe Price bracket
36230	DR BR 120		
36231			
1	Platine komplett m. LED Platine Printed circuit assembly w. LED	126403	57
2	Puffer rund TT Buffer round TT	126415	2
3	Stingriff Handrail in front	126414	3
4	Brückenbaugruppe Connector	126404	12
5	Umlauf lackiert Running board coated	126413	5
6	TS-Führerstand -himmel .... Part set drivers cab	126398	10
7	GF-Schraube M1,6X4 GF-Screw M1,6x4	114850	2
8	TS-Deichsel, Maschineneinrichtung... Part set drawbar, machineinterior,....	126401	19
9	TS-Dachdeckel u. Dachlüfter Part set roof cover a. roof exhauster	126412	12
10	Gehäuse kpl. Betr.nr. 120 048-4 Body assembly Loco no. 120 048-4	126405	66
11	TS-Fenster u. Lichtleiter Part set window a. light transmission bar	126411	17
12	Motor Motor	85125	55
13	Kardanschale Cardan bearing	87104	3
14	TS-Kardanschale u. Kardanwelle Part set cardan bearing a. cardan shaft	126402	10
15	Schneckensatz Worm set	86979	24
16	Schneckenachslager Bearing for worm axle	89750	4
17	Beilagscheibe Washer	120735	2
<b>Sound</b>			
18	Loksound micro Loco sound micro	126417	80
19	Lautsprecher Loudspeaker	126668	24

Änderungen in Konstruktion und Ausführung vorbehalten  
We reserve the right to change the construction and specification



36230		DR	BR 120	=	
36231				=	🔊
Pos. Nr. Pos.no.	Beschreibung Description	Art.-Nr. Art.no.	Preisgruppe Price bracket		
1	Hafrings.10Stk. 8-10mm 0,3 Set with traction tires 10 pieces	85611	17		
2	Zugfeder Spring	86249	2		
3	Zwischenzahnrad Z=17 M=0,3 Between gear Z=17 M=0,3	97738	2		
4	Schnecken Zahnrad Z=22/12 M=0,3 Worm gear Z=22/12 M=0,3	86482	3		
5	TT-Kupplung neu Tilling TT-Coupling new Tilling	124371	19		
6	Zahnrad Z=14 M=0,3 Gear Z=14 M=0,3	86496	2		
7	Zahnrad Z=19 Gear Z=19	86499	2		
8	Schraube M1,6x6mm Screw M1,6x6mm	113069	2		
9	TS-Radkontakt li. u. re. Part set wheel current contact strip le. a. ri.	126416	7		
10	Teilesatz Getriebe Part set gesr	126408	15		
11	Grundrahmen Main frame	126397	23		
12	Tankbehälter links u. rechts Tank box left a. right	126399	6		
13	Schienenräumer Track sweeper	126400	4		
14	Zurüstbeutel Bag with accessories	126406	15		
15	TS-Blende links u. rechts Part set bogie frame left a. right	126410	24		
16	Radsatz mit 2 Hafringen Wheelset with 2 traction tyres	126409	20		
17	Radsatz ohne Hafringe Wheelset without traction tyres	126407	18		
18	GF-Schraube M1,6X4 GF-Screw M1,6x4	114850	2		